

Specification of Organ

FREEMASONS' HALL,
COLLINS STREET, ❧
MELBOURNE. ❧ ❧ ❧

GEO. FINCHAM & SON,
ORGAN BUILDERS,

546 Bridge Road, Richmond.

Specifications of Organ.

SCHEME—

3 Manuals.
 First Swell Organ Compass, CC to C, 61 notes.
 Second Great " " " " " "
 Third Choir and Solo " " " " " "
 Independent Pedal Organ Compass, CCC to F, 30 notes.

SUMMARY—

Great Organ, No. of Stops	11,	No. of Pipes	793.
Swell " " "	11,	" "	781.
Choir and Solo " " "	12,	" "	606.
Pedal " " "	8,	" "	240.
Couplers " " "	12,	" "	
Tremulant to Choir and Solo	1,	" "	
Total No. of Stops	55	Total Pipes	2,510

GREAT ORGAN—CC to C, 61 notes.

1. Double Open Diapason, metal,	61 pipes,	16 feet.
2. Open Diapason	" 61	8 "
3. Loud Gamba	" 61	8 "
4. Claribel,	wood, 61	8 "
5. Octave,	Metal 61	4 "
6. Flute "Wald"	Wood 61	4 "
7. Twelfth,	Metal 61	3 "
8. Fifteenth,	" 61	2 "
9. Mixture,	" 183	3 Rnks.
10. Posaune	" 61	8 "
11. Clarion	" 61	4 "

SWELL ORGAN—CC to C, 61 notes.

1. Gedact, Wood,	61 pipes,	16 feet.
2. Geigen Prin.,	Metal, 61	" 8 "
3. Gedact,	Wood, 61	" 8 "
4. Salsinal,	Metal, 49	" 8 "
5. Rob. Flute	" 61	" 4 "
6. Gemshorn	" 61	" 4 "
7. Piccolo,	Wood, 61	" 2 "
8. Mixture,	Metal, 183	" 3 Rnks.
9. Cornopean	" 61	" 8 feet.
10. Oboe,	" 61	" 8 "
11. Clarion	" 61	" 4 "

CHOIR AND SOLO ORGAN—CC to C, 61 Notes.

Contained in separate Swell-box.

1. Dulciana	Metal, 61 pipes,	8 feet.
2. Gamba	" 49	" 8 "
3. Voix Celeste	" 49	" 8 "
4. Flute Harmonique	" 61	" 8 "
5. Gedact " Lieblich "	" 61	" 8 "
6. Clear Flute	Wood, 61	" 4 "
7. Piccolo Harmonique	Metal, 61	" 2 "
8. Bassoon	" 49	" 10 "
9. Clarionet	" 61	" 8 "
10. Orchestral Oboe	" 61	" 8 "
11. Vox Humana	" 61	" 8 "
12. Oboe Clarion	" 61	" 4 "

PEDAL ORGAN—CCC to F, 30 Notes.

1. Sub-Bass	Wood, 30 pipes,	32 feet.
2. Open Diapason	" 30	" 16 "
3. Bourdon	" 30	" 16 "
4. Principal	Metal, 30	" 8 "
5. Bass Flute	Wood, 30	" 8 "
6. Twelfth	Metal, 30	" 6 "
7. Fifteenth	" 30	" 4 "
8. Trombone	" 30	" 16 "

COUPLERS—

1. Swell to Great Organ.	
2. " " " Super Octave.	
3. " " " Sub	
4. " Super Octave (on itself). "	
5. " Sub	
6. Great Super " "	
7. " Sub " "	
8. Choir to Great Organ.	
9. Swell to Choir	
10. Swell to Pedal	
11. Great " "	
12. Choir " "	

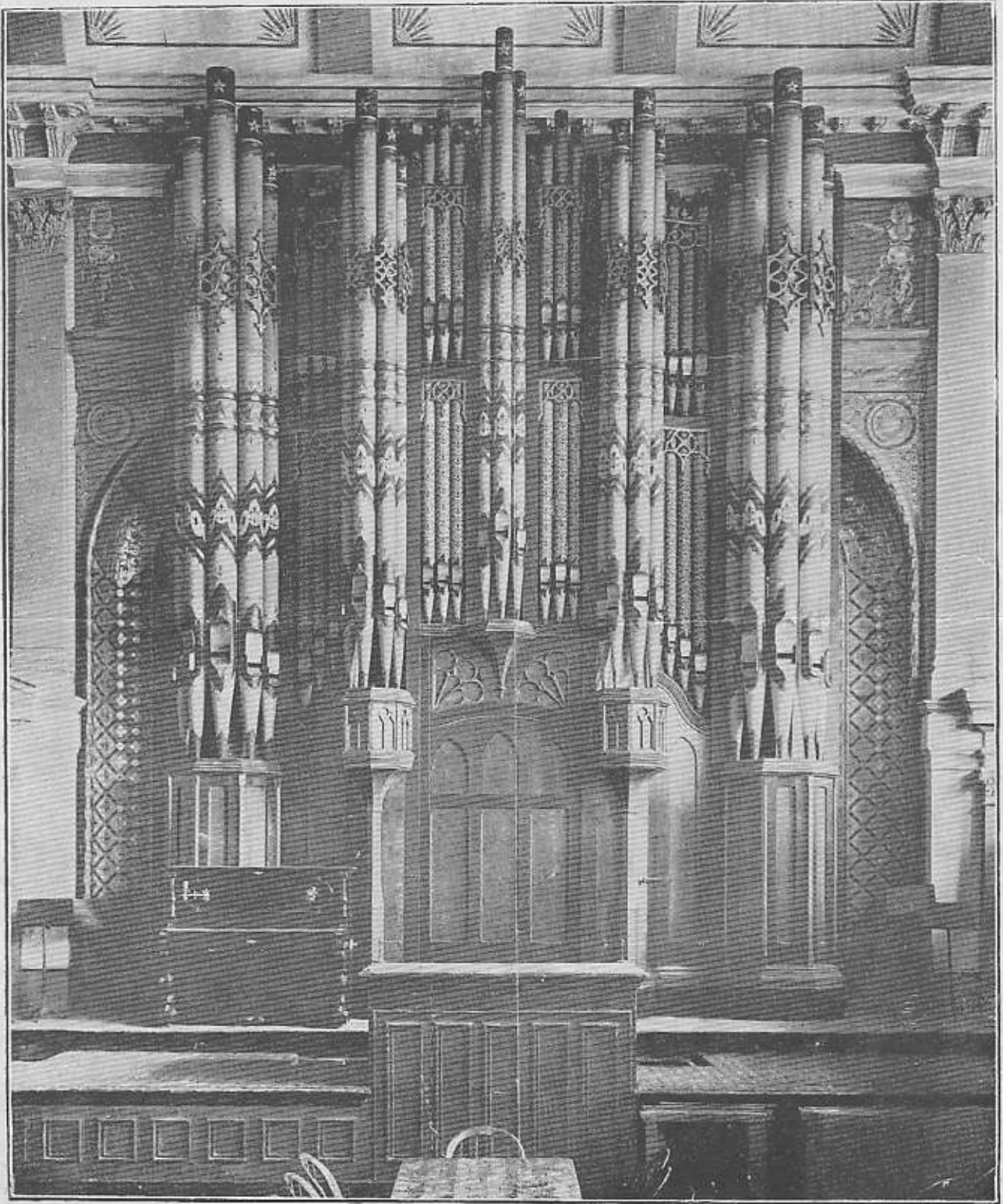
1. Tremulant to Choir Organ.

Pneumatic Combination Pistons,
 Five to Great Organ.
 Four to Swell Organ.
 Four to Choir and Solo.
 The Console is detached from the Organ.

Memorandum of Construction.

* * *

The Tubular Pneumatic Principle is used throughout.
 The following Special Features are introduced in the Organ:—
 Fincham & Sons Patent Automatic Exhaust, perfecting the repetition in the above principle.
 Hunter's Patent Coupling Medium, giving inexhaustible facilities for Couplers, without affecting the touch.
 Fincham & Son's Patent Comprehensive Combination Medium. This patent is acted upon by the Pneumatic Pistons between the manuals.
 The whole of the Stops in the Swell, Great and Pedal Organs, also the Couplers are controlled by the Great Organ Pistons, and progressively increases the power to each Organ relatively until full power is attained, and back to PP without in any way interfering with the independent use of the Pneumatic Pistons to the other manuals.
 The Soundboard Tables, Slides and Upper-Boards of fine old Cedar and Walnut.
 Soundboard Tables constructed with Fincham & Son's compensating joints.
 Swell-Box double lined, the space between inner and outer lining being well packed with sawdust.
 The Organ supplied with Wind Reservoirs of ample capacity, also generators, and all necessary trunking, valves, etc., etc.
 The Wood Pipes are of best well seasoned pine, etc.
 The Metal Pipes are of spotted metal, composed of good mixture of pure tin and lead.
 Front Pipes of Best Belgium Laminated Zinc.
 The whole of Pipes are of the most appropriate scales, to be regulated to suit the acoustics of the building.
 Pedal Clavia radiating and concave.
 Keys of Fine Ivory and Ebony, Swell and Great keys overhanging.
 The whole of the materials and workmanship are of the best quality and artistic finish.



The above Organ was Built by Geo. Fincham, Melbourne, and was awarded Special Gold Medal at the Centennial International Exhibition, Melbourne, 1888.